



**GHP Systems, Inc.**  
1000 32nd Ave  
Brookings, SD 57006

# GeoVault® Data Sheet

(605) 697-7869 tel  
(605) 697-9118 fax  
888-447-7757 toll-free  
www.ghpsystems.com

## GeoVault® Physical Data

GEOVAULT® MODEL	LENGTH	WIDTH	HEIGHT	PRE-CONCRETE VAULT/MANIFOLD WEIGHT (LBS)	REQUIRED CONCRETE (CUBIC YARDS)
GV - 08	8' - 10"	6' - 10"	6' - 11"	< 6,500	6.25
GV - 10	10' - 10"	6' - 10"	6' - 11"	< 8,000	7.25
GV - 12	12' - 10"	6' - 10"	6' - 11"	< 9,500	8.25
GV - 14	14' - 10"	6' - 10"	6' - 11"	< 11,000	9.00
GV - 16	16' - 10"	6' - 10"	6' - 11"	< 12,500	10.00
GV - 18	18' - 10"	6' - 10"	6' - 11"	< 14,000	11.00
GV - 20	20' - 10"	6' - 10"	6' - 11"	< 15,500	12.00
GV - 22	22' - 10"	6' - 10"	6' - 11"	< 17,000	12.75
GV - 24	24' - 10"	6' - 10"	6' - 11"	< 18,500	13.75

## Maximum Number of Circuits

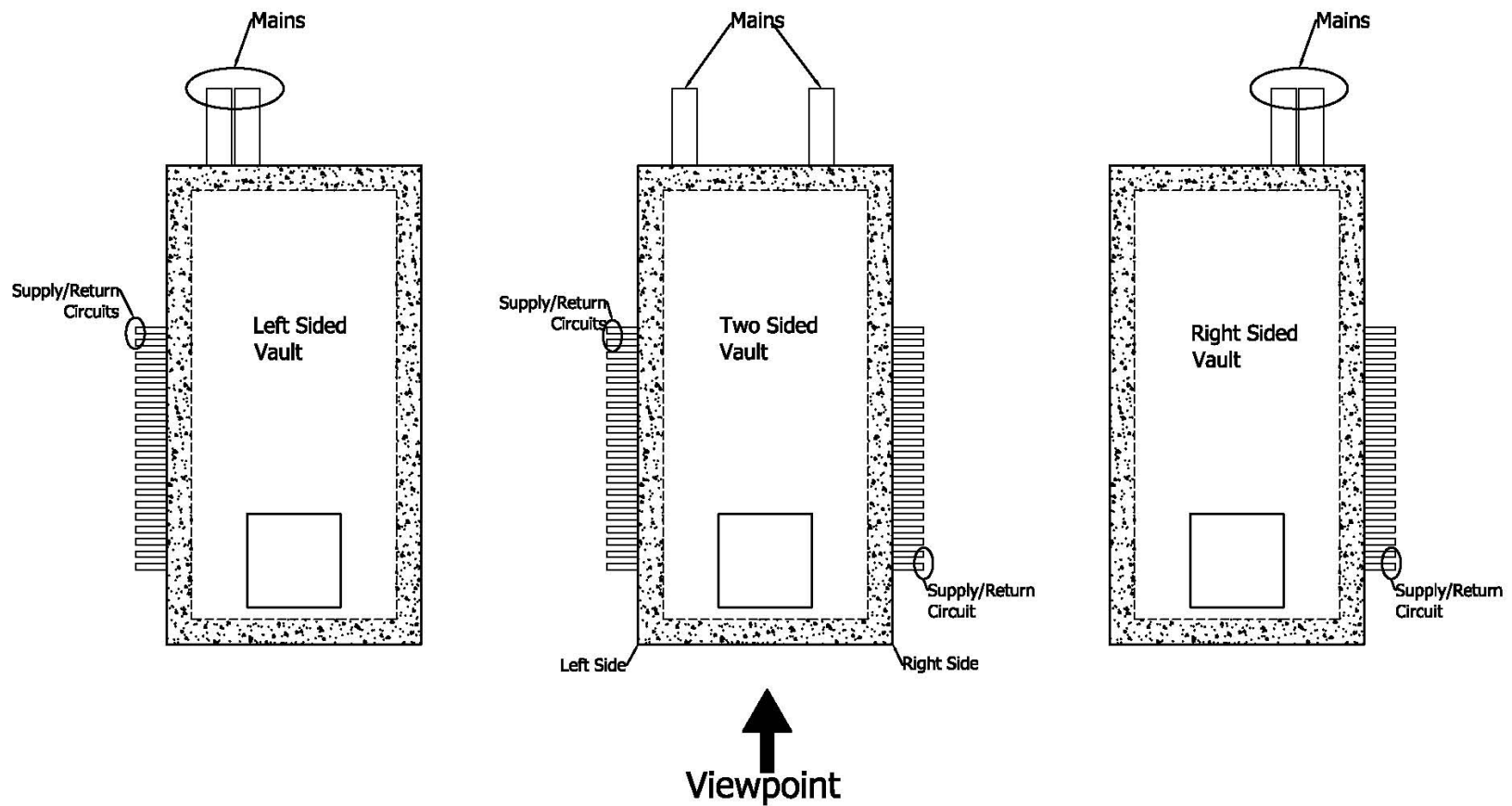
GEOVAULT® MODEL	ALL CIRCUITS ON ONE SIDE UP TO 10" MAIN			CIRCUITS ON TWO SIDES UP TO 10" MAIN		
	2"	3"	4"	2"	3"	4"
GV - 08	6	5	4	10	8	6
GV - 10	9	8	6	16	14	10
GV - 12	12	10	8	22	18	14
GV - 14	15	13	10	28	24	18
GV - 16	18	16	12	34	30	22
GV - 18	21	19	14	40	34	26
GV - 20	24	21	16	46	40	30
GV - 22	27	24	18	52	46	34
GV - 24	30	26	20	58	50	38

*Note: For a 12" Main, take off 1 circuit for a single sided vault and 2 circuits for a double sided vault.*

**Notice:** Information contained in this document is subject to change without notice. This document reports accurate and reliable information to the best of our knowledge but our suggestions and recommendations cannot be guaranteed because the conditions of use are beyond our control. The user of such information assumes all risk connected with the use therefore. GHP Systems, Inc. assumes no responsibility for the use of information presented herein and hereby disclaims all liability in regard to such use. GHP Systems, Inc. reserves the right to upgrade the design/specifications of the GeoVault® without notice.

# GeoVault® Reference Illustration

## Top View



**Notice:** Information contained in this document is subject to change without notice. This document reports accurate and reliable information to the best of our knowledge but our suggestions and recommendations cannot be guaranteed because the conditions of use are beyond our control. The user of such information assumes all risk connected with the use therefore. GHP Systems, Inc. assumes no responsibility for the use of information presented herein and hereby disclaims all liability in regard to such use. GHP Systems, Inc. reserves the right to upgrade the design/specifications of the GeoVault® without notice.